

# Universal Mounting Bracket System

## Installing the Mounting Brackets

### Installing Sign Bracket

Attach the Sign Bracket to the backside of the sign using the included hardware.



Figure 1: Use supplied hardware



Figure 2: Backside of Sign Bracket

### Installing Pole Bracket

The Pole Bracket can be secured to any type of standard or Telespar type pole by a choice of banding straps, lag screws, or bolts and nuts.



Figure 3: Pole Bracket mounted to circular pole



Figure 4: Pole Bracket mounted to 2" Telespar pole

**Installation of Pole Bracket on Telespar Pole**

Use the supplied 2.5" stainless steel security bolts and nuts to secure the Pole Bracket to the 2" Telespar pole.



**A 2" Telespar pole should be used**

It is very important that the head of the bolt be placed on the Telespar pole (See Figures 5 and 6) and that the nuts be placed on the inside part of the bracket (see Figures 7 and 8).

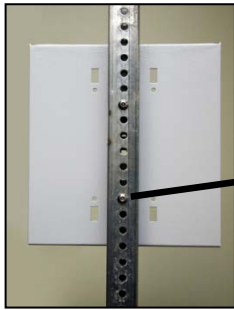


Figure 5

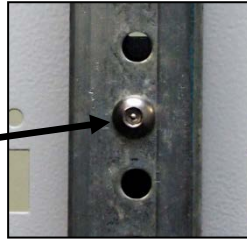


Figure 6



Figure 7

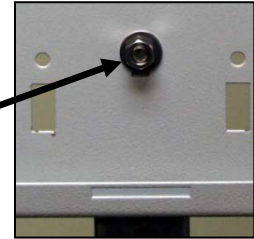


Figure 8

**Installation of the Pole Bracket using supplied banding straps**

It is highly recommended that if banding is used to secure the Pole Bracket, additional screws and/or bolts should also be used (see Figure 10 below) to further prevent theft and vandalism.



Figure 9: Pole Bracket banded to utility pole

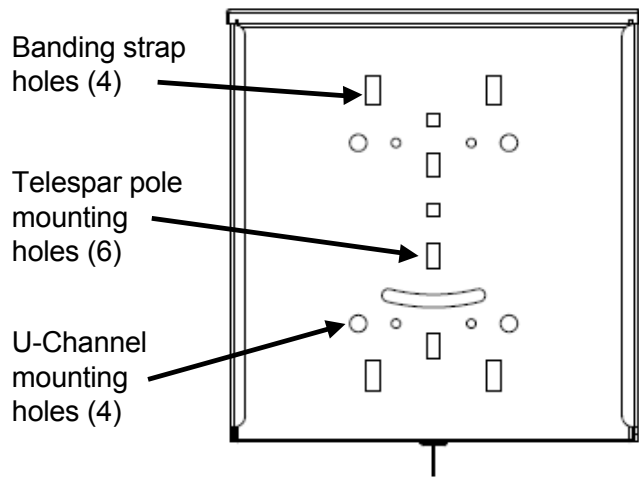


Figure 10: Additional lag bolts should be used for added security



Figure 11: Profile view of Pole Bracket

**Pole Bracket**



**Mounting and Dismounting the Sign**

The radar sign easily mounts by sliding the sign down onto the Pole Bracket and dismounts by sliding the sign up off of the Pole Bracket. Once mounted, the sign should be locked into place as shown in Figure 14.

**Step 1: Position the sign above the bracket**



Figure 12

**Step 2: Slide the sign down the bracket**



Figure 13

**Step 3: Lock the sign in place**



Figure 14

**Locking mechanism in "unlocked" position**

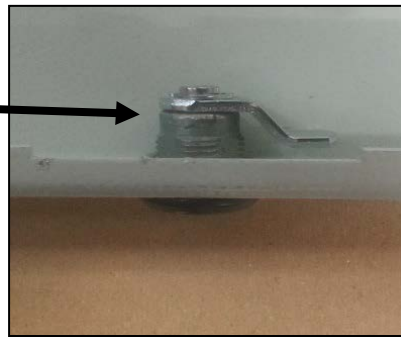


Figure 15



**WARNING:** To prevent damage to the locking mechanism of the Universal Mounting Bracket System, the key must be removed from the lock and the locking mechanism must be set in the "unlocked" position (see Figure 15) BEFORE sliding the sign ON or OFF of the Pole Bracket.