



170-Etherport Ethernet-to-Serial Media Converter

General Description

The 170-Etherport is an environmentally hardened Ethernet-to-Serial Media Converter designed to plug directly into a 170 Controller's modem slot. It supports reliable operation over a wide temperature range: -34.6°F to +165.2°F (-37°C to +74°C).

The fully configurable network interface connects to the network via an RJ45 Ethernet 10/100Base-T connector. Both the Host Interface and the Auxiliary Port use asynchronous serial RS232 communication, supporting data rates from 300 bps to 921,600 kbps.

These two serial ports share a single communications channel. The Host Interface connects through the card edge directly to the local controller, while the Auxiliary Port uses a DB9 connector, enabling copper or wireless communication to be integrated into the main data stream.

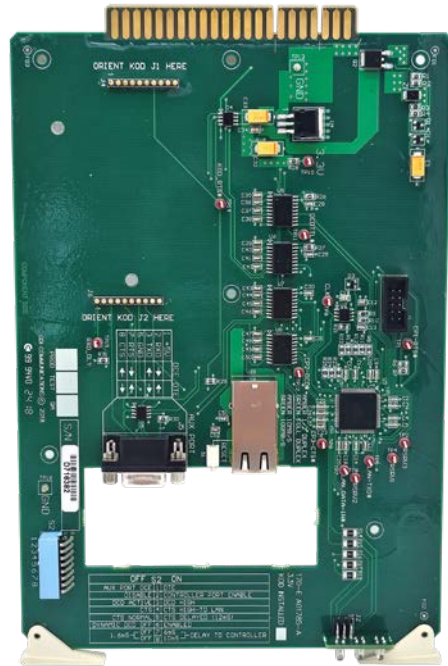
The Auxiliary Port is also switch-selectable to operate either as a DCE or DTE interface. In DCE mode, it works in parallel with the Host Interface and can be used to configure the Etherport via a PC terminal program. In DTE mode, it serves as an external host interface, allowing connection to another DCE device, such as an FSK modem. Full handshaking is supported to ensure interoperability across diverse transmission systems.

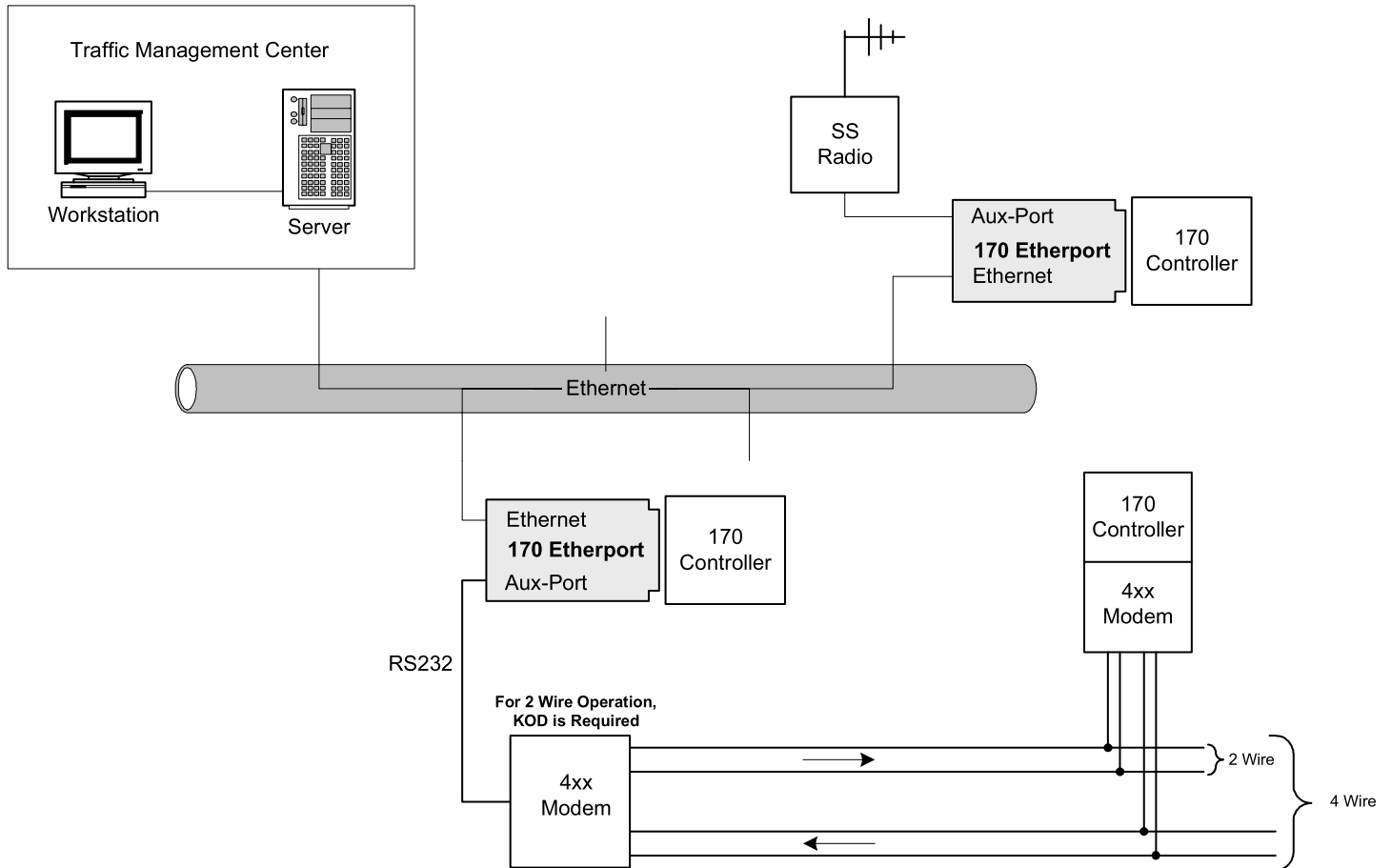
Applications

- Point to Point using TCP protocol
- Point to Point using UCP protocol
- Point to Multi-Point using TCP protocol (requires host program)
- Point to Multi-Point using UDP protocol

Ordering Codes

Model	Description
170-ETHERPORT	170-Etherport Plug-In For 170 Controller, 10/100Base Copper
170-ETHERPORT-K	170-Etherport Plug-In For 170 Controller, 10/100Base Copper w/KOD (Key On Device)
170-ETHERPORT-KS	170-Etherport Plug-In For 170 Controller, 10/100Base Copper w/KOD (Key On Device) and Shield
170-ETHERPORT-S	170-Etherport Plug-In For 170 Controller, 10/100Base Copper w/ Shield





This diagram illustrates the flexibility of the 170-Etherport.