

# Cone Ring Light

P/N: AP-31

## General Description

The Rechargeable LED Cone Ring Light is designed for enhanced visibility in various environments. The durable and waterproof construction makes it suitable for any weather. Each ring light fits standard traffic cones and the integrated magnets on the base allow for secure mounting on cars and metal surfaces.

## Features

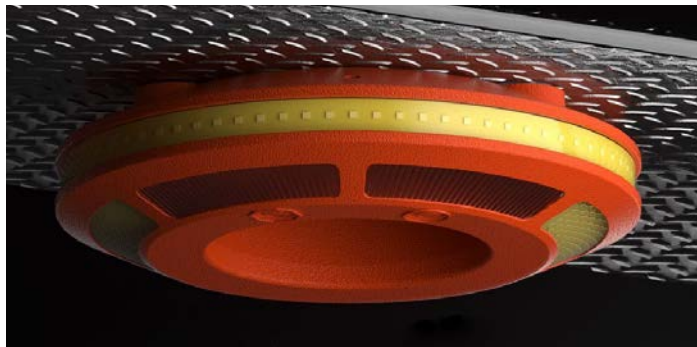
- 6 lighting modes: Rotating Flash, Quad Flash, Single Blink, Alternating Flash, SOS Flash, Steady "On"
- 360° visibility
- x2 reflective strips on the top face
- x4 light diffusers on the top face
- Rechargeable with USB-C charging
- Waterproof IPX7 and durable body
- x3 built-in magnets for easy mounting
- Includes: x1 Ring Light and x1 Charging Cord

## Specifications

- Functions: 6 lighting functions
- Battery: Built-in rechargeable Li-ion. 3.7v 2200mAh
- Charge Port: USB-C
- Charge Time: 3 hours
- Use Time: Varies by function, up to 17 hours
- Weight: 0.44 lb
- LED Color: Amber
- LED Wattage: 15W
- Amount of LEDs: 30 LEDs
- Visibility: 360°
- Diameter: 6.7" (edge to edge), 4" (inside hole)
- Height: 1.6"
- Number of Magnets: 3 on the bottom
- Material: Thermoplastic Rubber Polycarbonate (TPR PC)
- Water Rating: IPX7



Traffic cone not included



Attach to cars, trucks, and other metal surfaces

